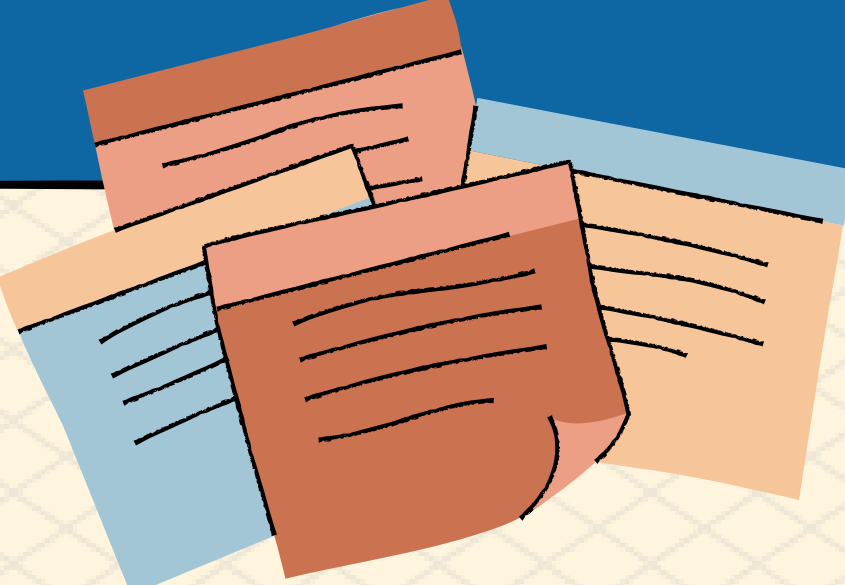


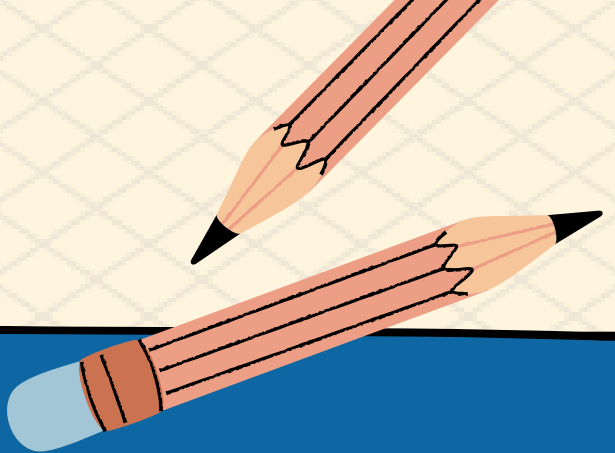
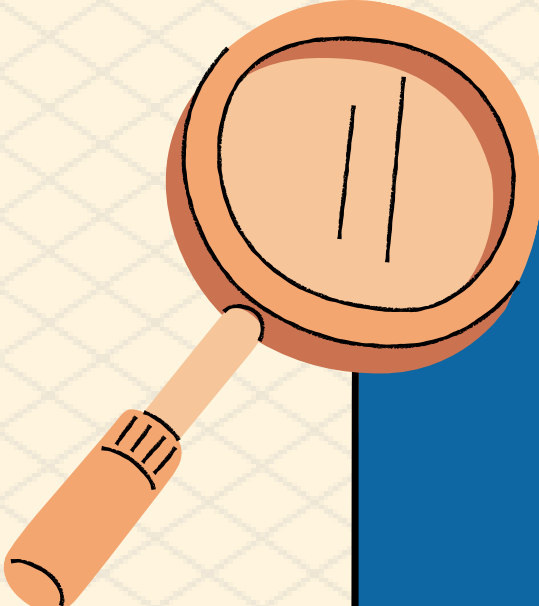





Welcome to LABCICI

Learning & Beyond
Childcare and Intervention
Center, Inc.

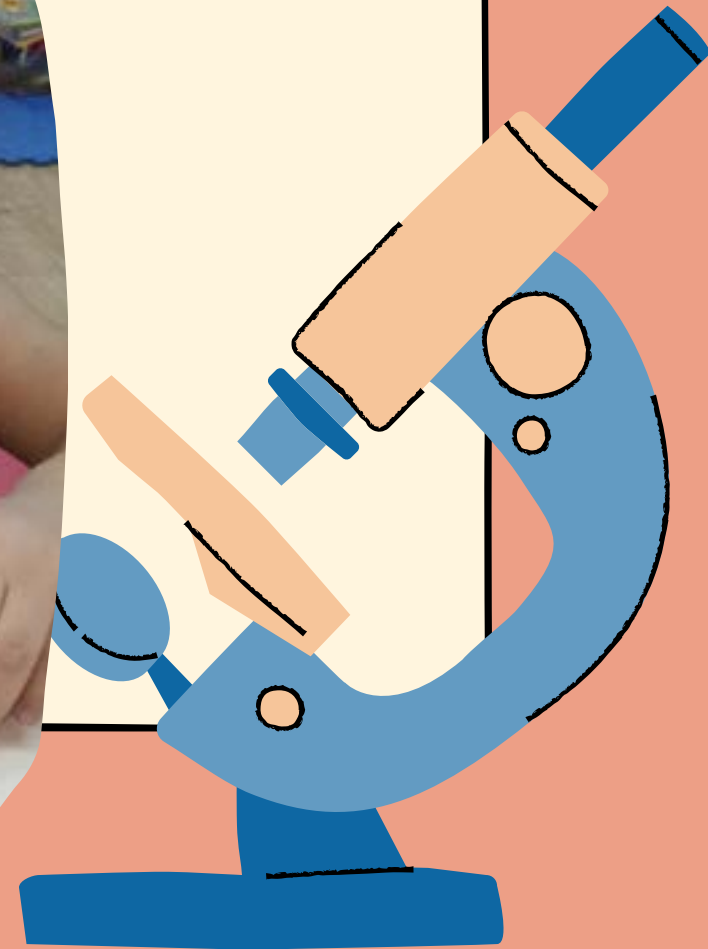


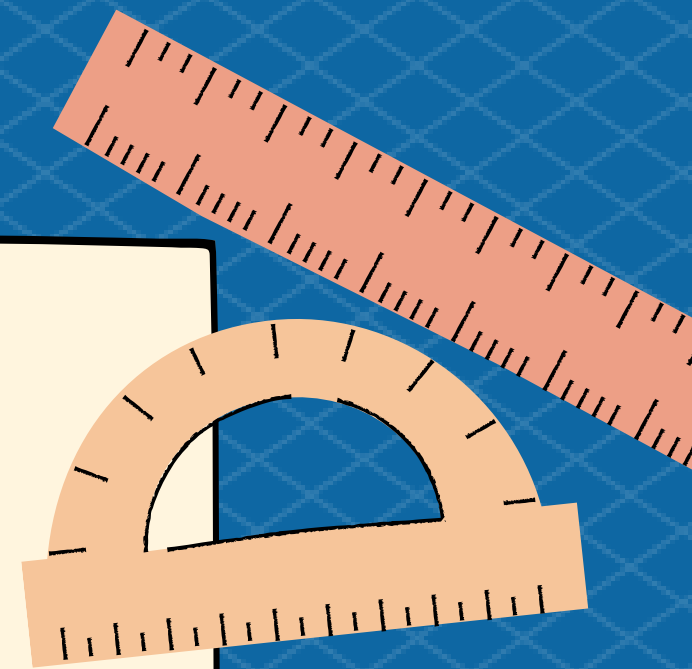
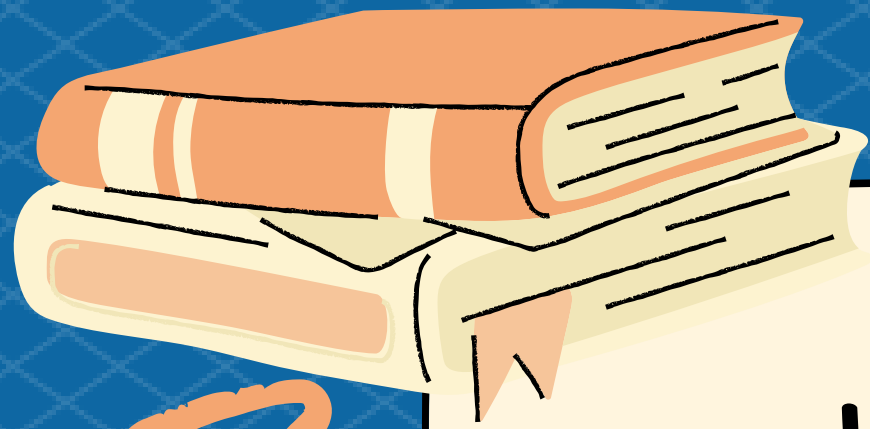


Learning & Beyond Childcare and Intervention Center Inc. or LABCICI is a pre-school where teachers are trained to accept, accommodate, modify, and individualize lesson presentations.



LABCICI nurtures individual differences and carefully plans lessons while adapting to different techniques and strategies in teaching.

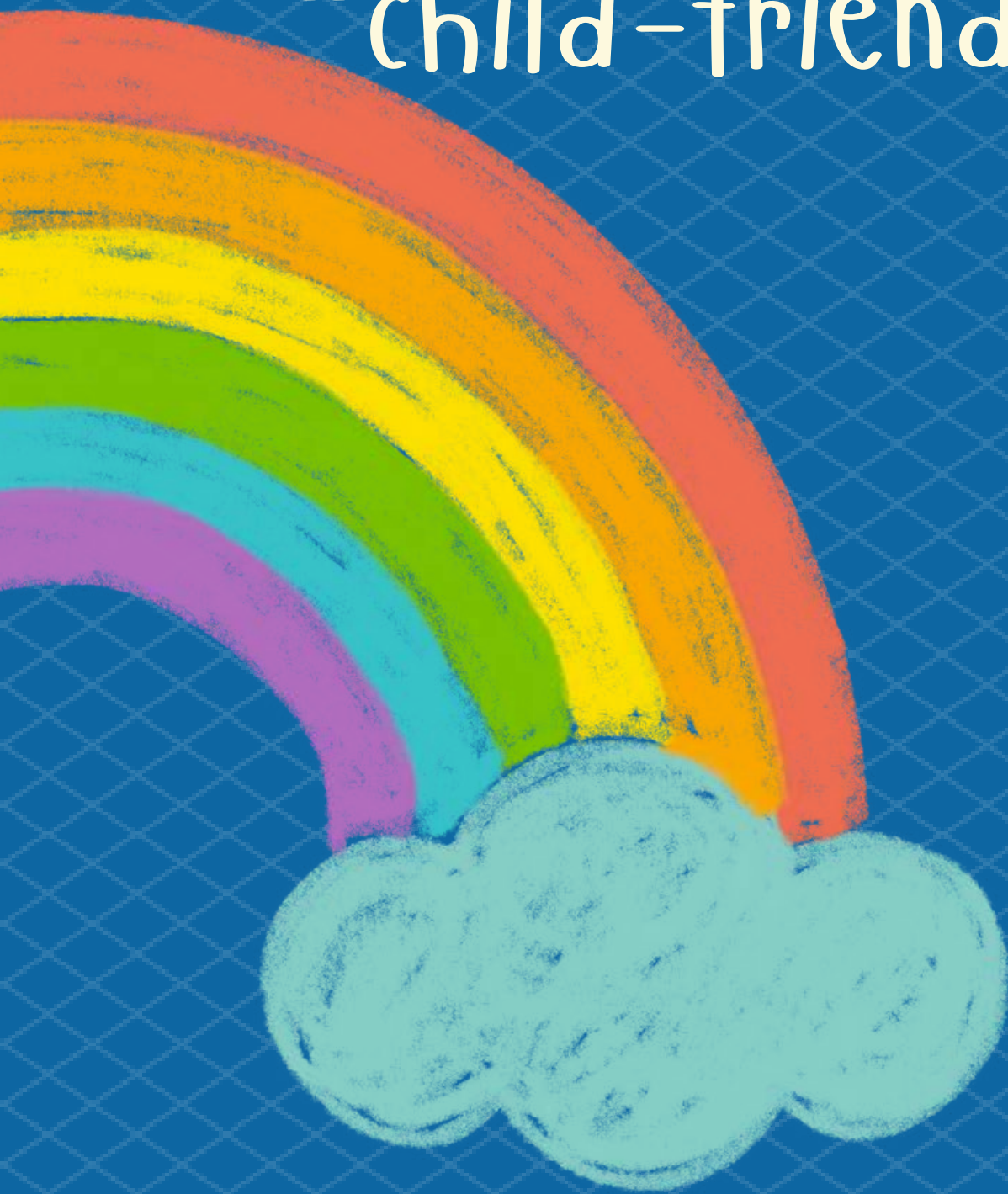




LABCICI recognizes strengths and capabilities of children to help in the support and development of their particular learning needs through differentiated instructions.



LABCICI embraces each child with respect, patience, and understanding, thus achieving a peaceful, healthy, productive, and prepared “child-friendly” environment for everybody.



LAB offers a
“child-friendly”
and a “child-
centered”
environment.



Learning & Beyond Childcare and Intervention Center, Inc.

VISION:

To provide educational
excellence for all.



MISSION:

Learning & Beyond
Childcare and Intervention
Center, Inc. exists to
promote quality education
for all students and to
help children with special
needs to have functional
learning and become
productive citizens of the
country.



MISSION:

We also provide a safe and developmentally-appropriate environment with high quality education that stimulates the child in his learning exploration.



PROGRAMS AND SERVICES

CLASSES:

Vertical Pre-school / Inclusion Class

Socialization Class

Transition Class

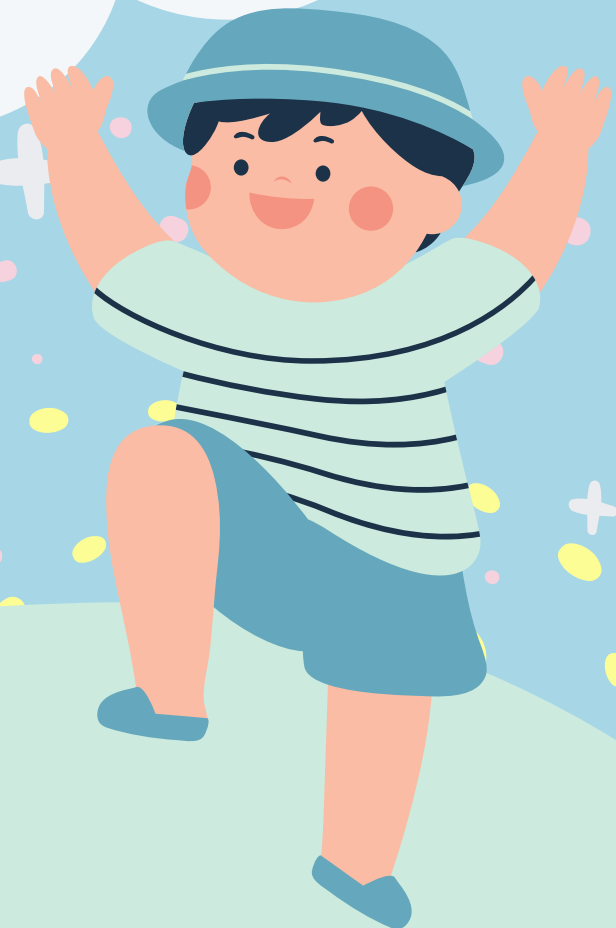
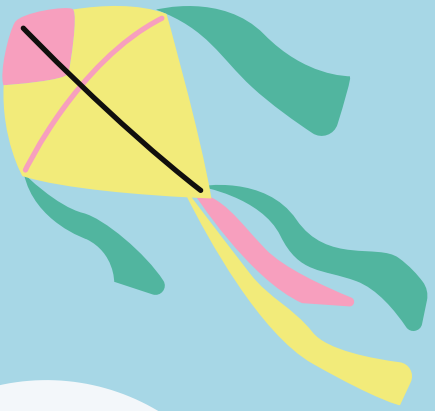
SPED Class



PROGRAMS AND SERVICES

CLASSES:

Vertical Pre-school /
Inclusion Class



PROGRAMS AND SERVICES

CLASSES

- **SOCIALIZATION CLASS**



PROGRAMS AND SERVICES

Transition Class



PROGRAMS AND SERVICES

SPED Class





OTHER SERVICES:

- Early Intervention
- Remedial Classes
- Tick2Talk
- Talk n' Tell
- I DO, You DO
- Occupational Therapy
- Speech Therapy

SUMMER CLASSES

- Creative Arts, Music n' Movements
- Play Group
- Literacy 1 & 2 (CLAP 1 & 2)
- Numeracy 1 & 2 (CNAP 1 & 2)
- SPED Class





12-Month
School
Calendar for
SY 2023-
2024



SUMMER MONTHS
(2023): MAY - JUNE

JULY: TEACHER'S
PREPARATION FOR SY 2023-
2024

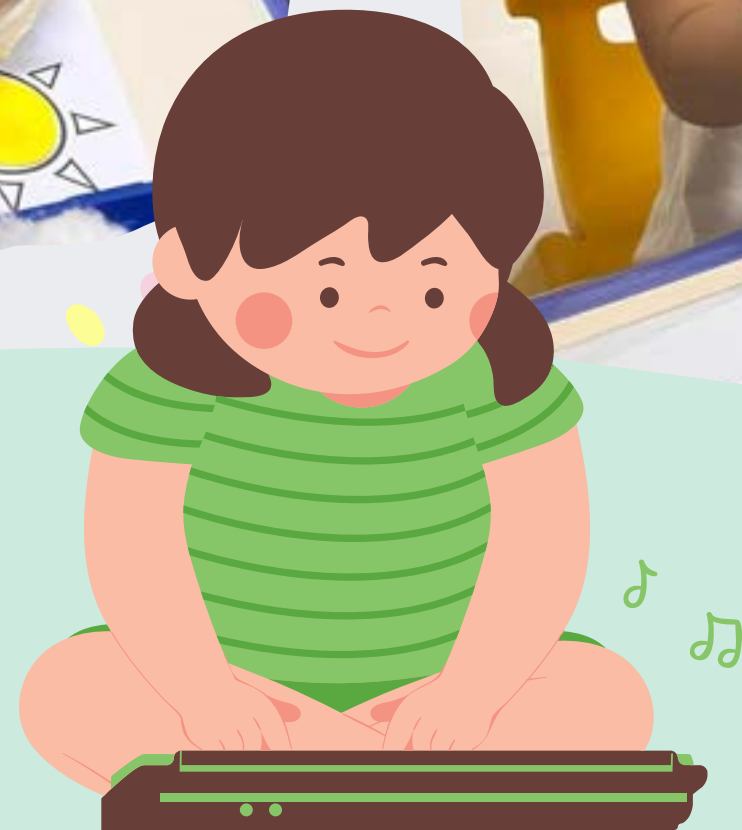


SCHOOL MONTHS:
AUGUST 2023 - MAY 2024



MAY TO JUNE CLASSES

Creative Arts, Music n' Movements





May to June Classes Play Group



May to June Classes

CNAP 1 & 2: Numeracy



MAY TO JUNE CLASSES

CLAP 1 & 2: LITERACY



LAB PROGRAMS FOCUS ON H.O.P.E (HEALTHY OPPORTUNITIES FOR PROGRESS AND EDUCATION) THROUGH:

1. Character Education in a Pre-school Community
2. Creative Arts, Music, and Movements
3. Understanding and Exploring God and His Creations
 - a. Nature (Science: Zoology, Botany)
 - b. Geography (Philippines and Neighbors Around the World)
4. CLAP (Community Literacy Access Program)
5. CNAP (Community Numeracy Access Program)





Strategies and Approaches:

1. Montessori Approach
2. Developmentally
Age - Appropriate Program



The Activities are designed to build up the milestones/indicators (skills and behavior) in the areas/domains of:

1. Physical Health, Wellness and Motor Development

2. Socio-Emotional Development

3. Cognitive Development

4. Creative Aesthetic Development

:





CLASS SCHEDULE

MORNING CLASS

•Pre-school/Inclusion

Vertical Class

(8:30 - 10:30 a.m.)

•Pre-school/Inclusion

Vertical Class

(10:30 a.m. - 12:30 nn.)

AFTERNOON CLASS

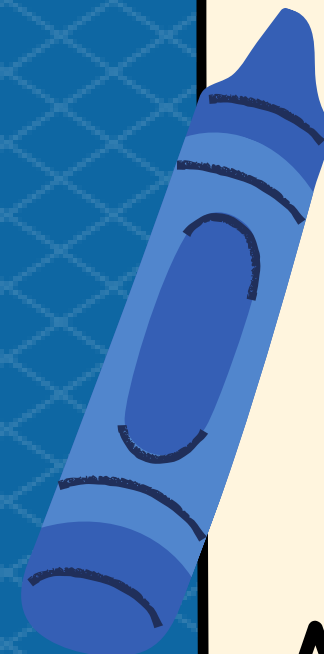
•Pre-school/Inclusion

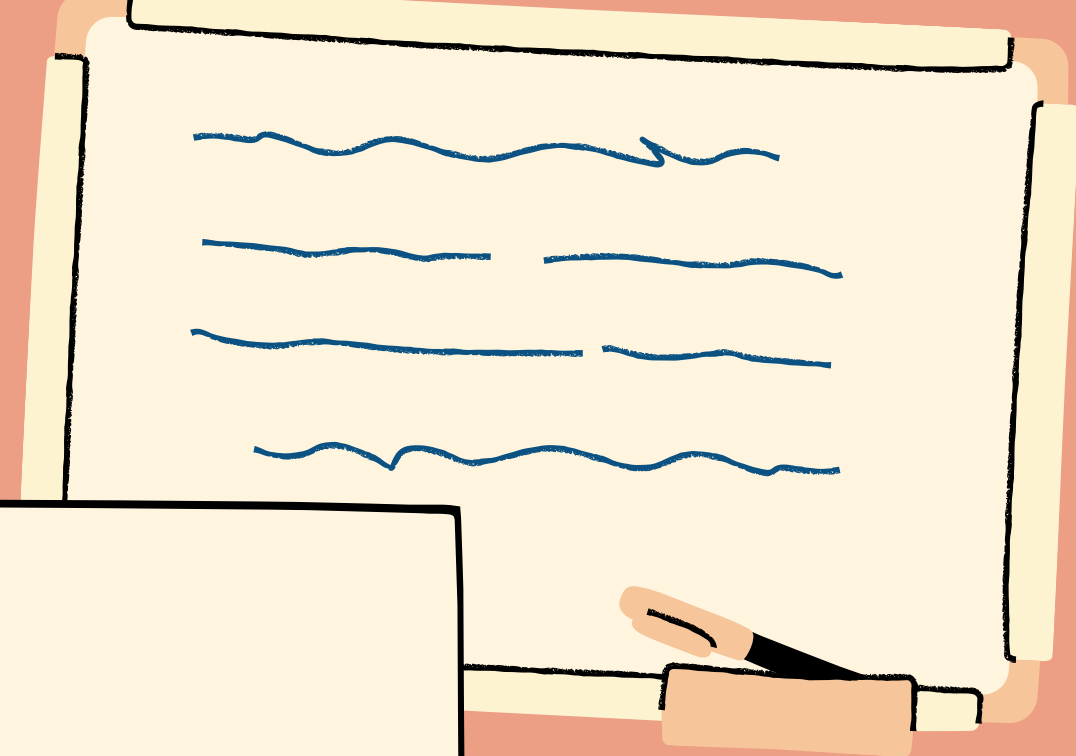
Vertical Class

(1:30 - 3:30 p.m.)

•SPED Class and
Academic Remediation

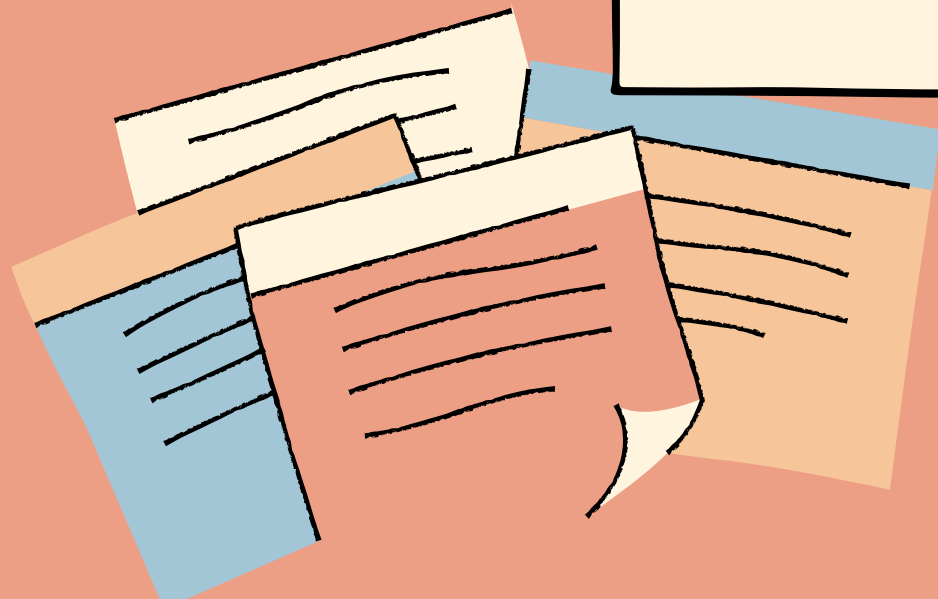
(3:30 - 5:30 p.m.)





Class Routine:

- Circle time
- Work period
- Circle time



PARENTS' ORIENTATION





PARENTS' ORIENTATION



BACK TO SCHOOL

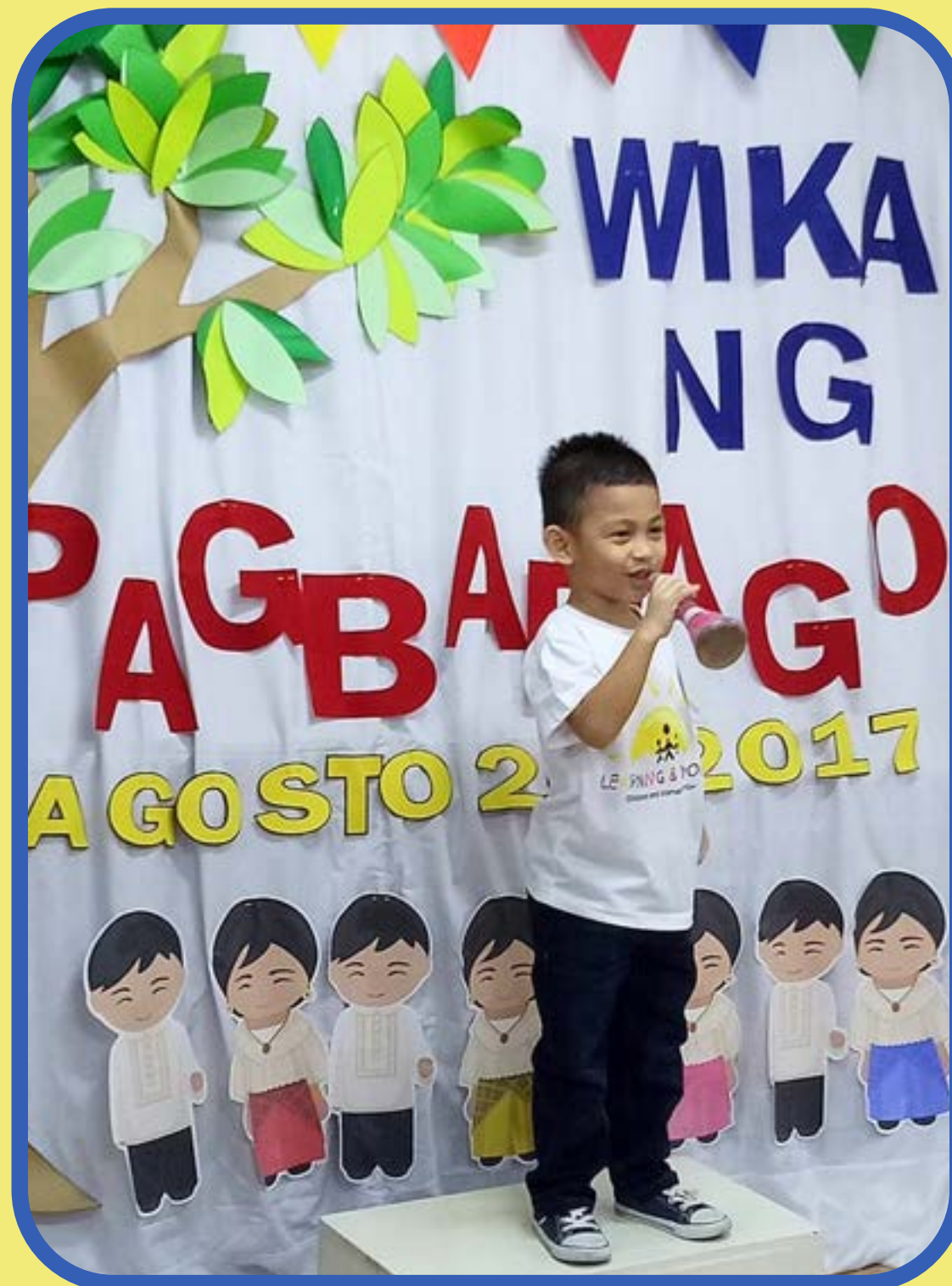
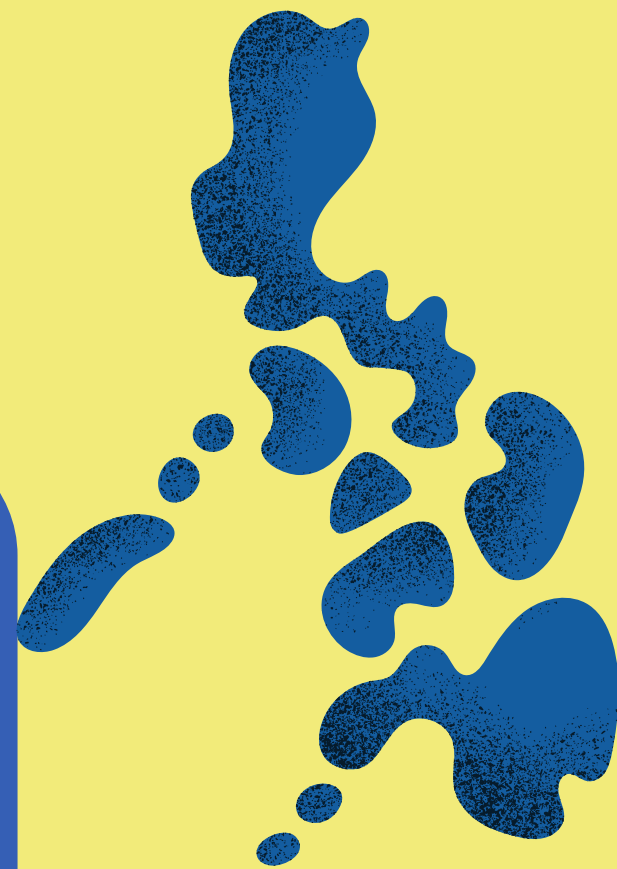


AUGUST



Buwan ng Wika

AUGUST



Buwan ng Wika

OCTOBER UNITED NATIONS



OCTOBER



UNITED NATIONS DAY

PARENTS' OBSERVATION WEEK



DECEMBER CHRISTMAS

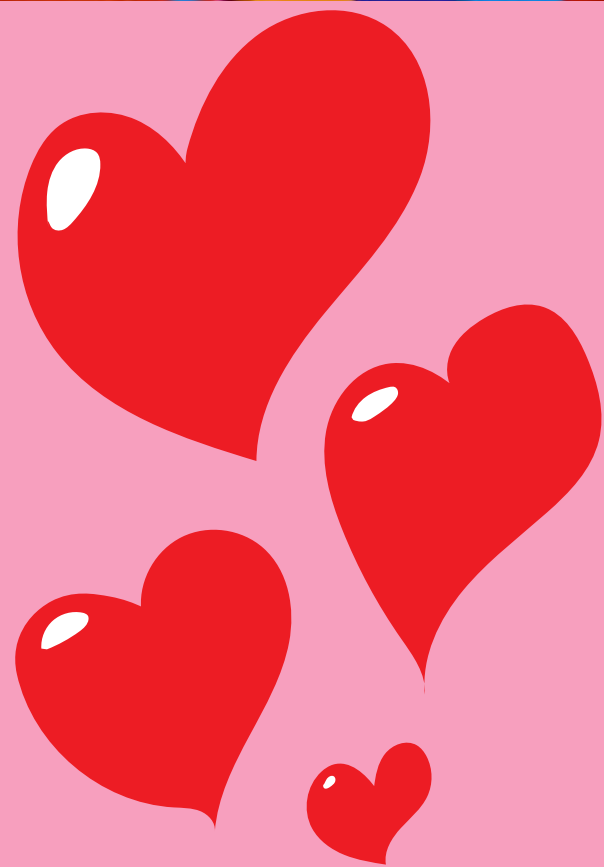


JANUARY



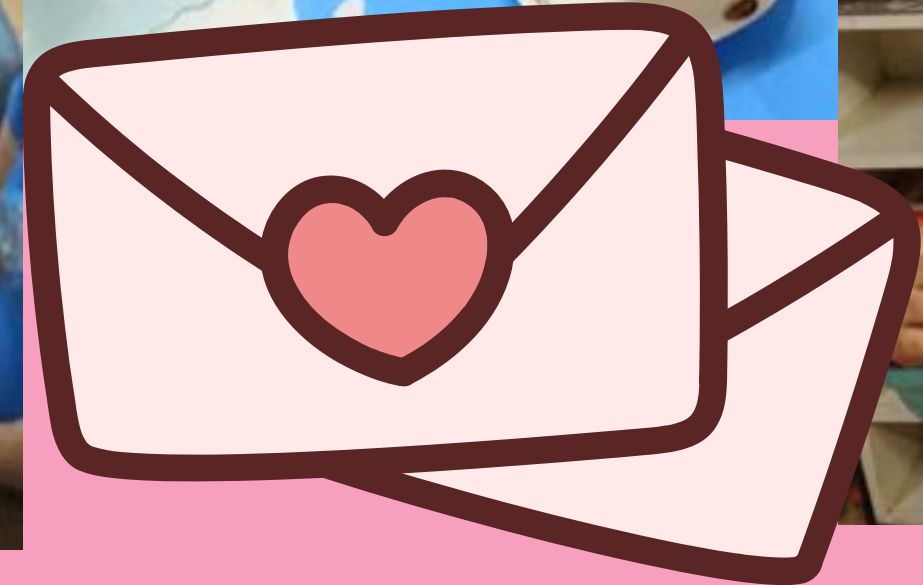
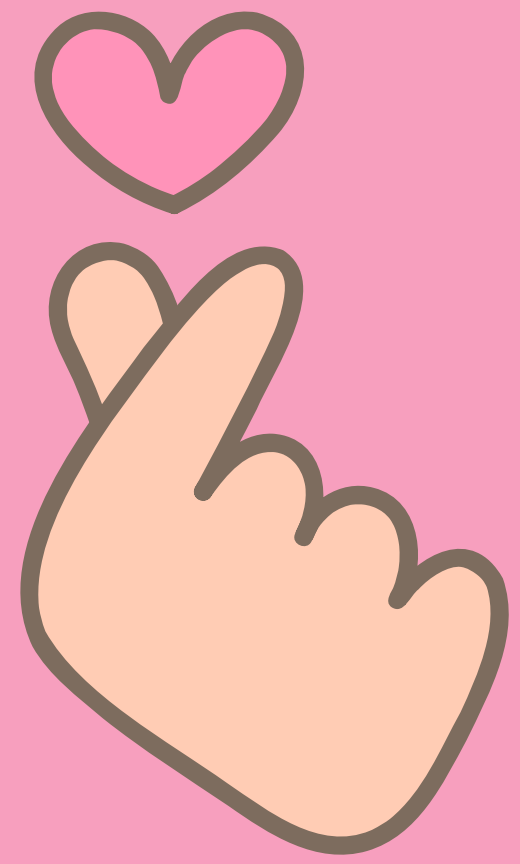
FEBRUARY

ENGLISH ELOCUTION



FEBRUARY

VALENTINE'S DAY CELEBRATION



MAY



ACHIEVEMENT
DAY





ACHIEVEMENT DAY





Physical
Environment
for
Learning
Explorations



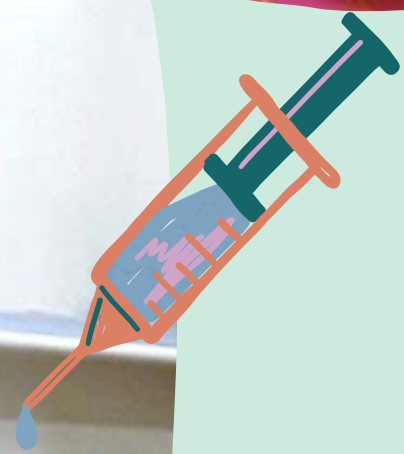


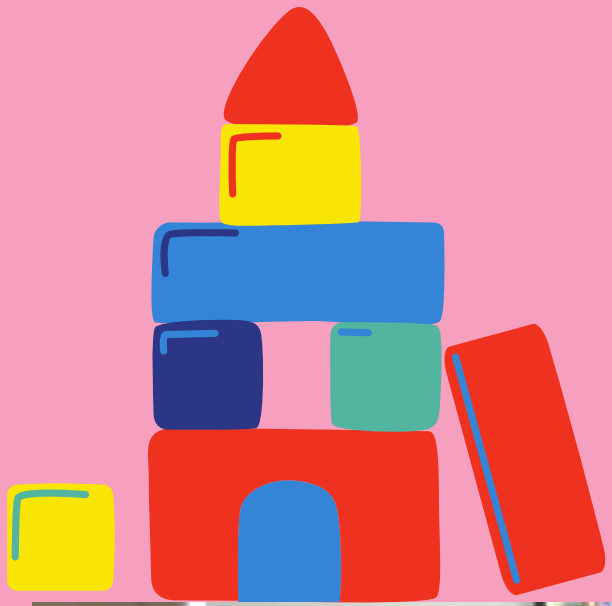


PRACTICAL LIFE EXERCISES



PRACTICAL LIFE EXERCISES





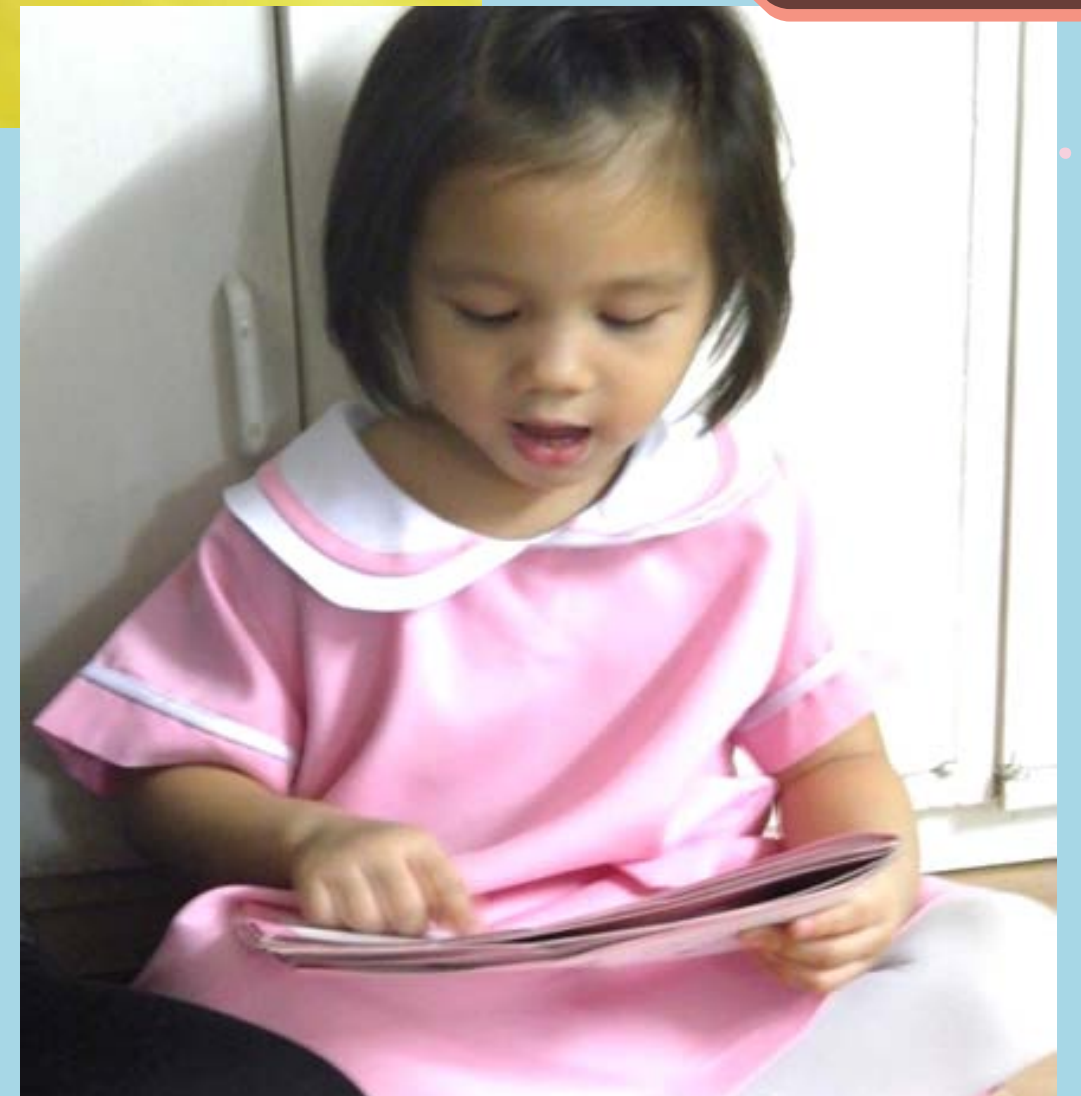
SENSORIAL

SENSORIAL





LITERACY
Reading, Language
and Writing



LITERACY



NUMERACY

1 2 3 4



NUMERACY

5



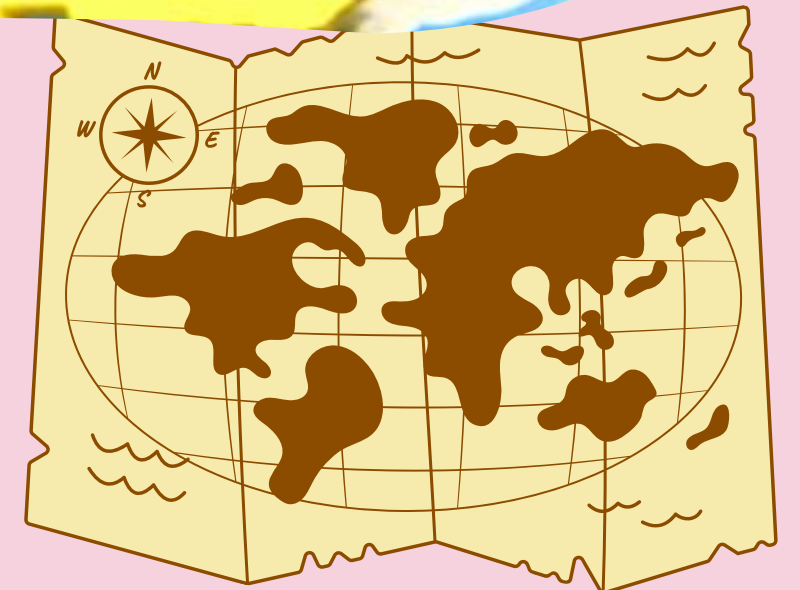
Understanding and Exploring God and His Creations

a. Nature (Science: Zoology, Botany)

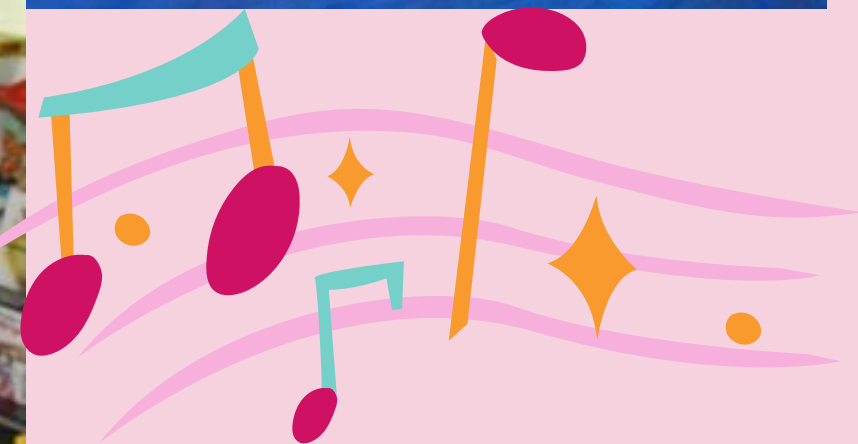
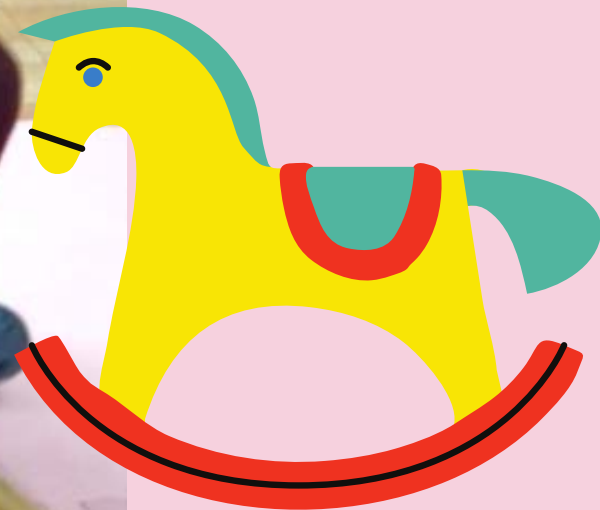




b. Geography (Philippines and Neighbors Around the World)



CAMM (Creative Arts, Music, and Movements)

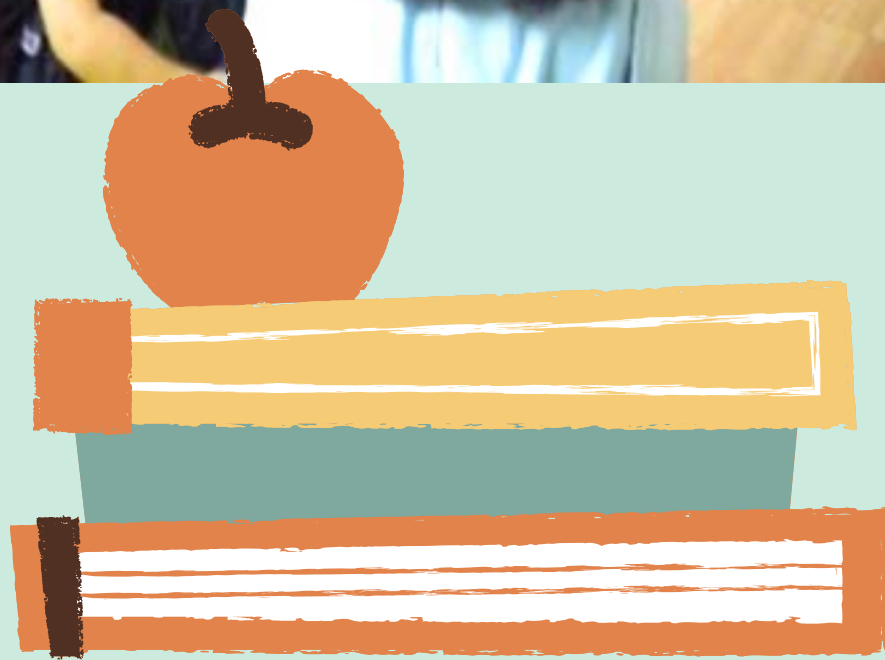


CAMM (Creative Arts, Music, and Movements)





CLASS ROUTINE:



Circle Time

CLASS ROUTINE:



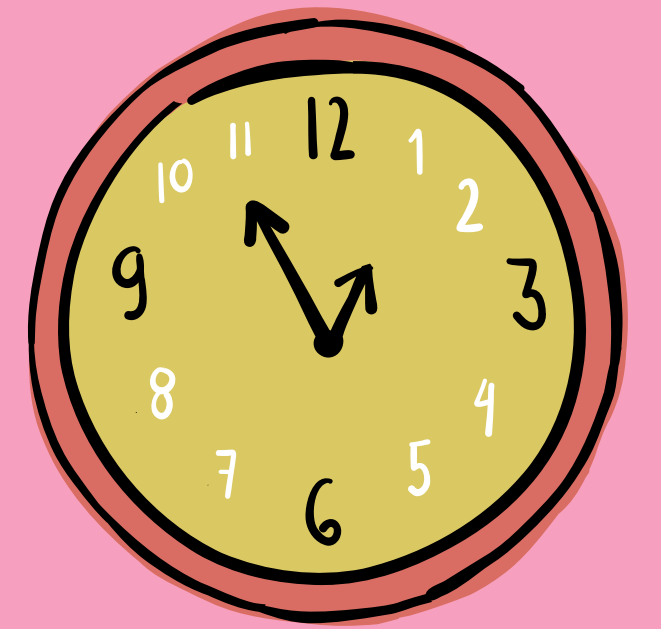
Circle Time

Circle Time





Work Period



Work Period

Inclusion

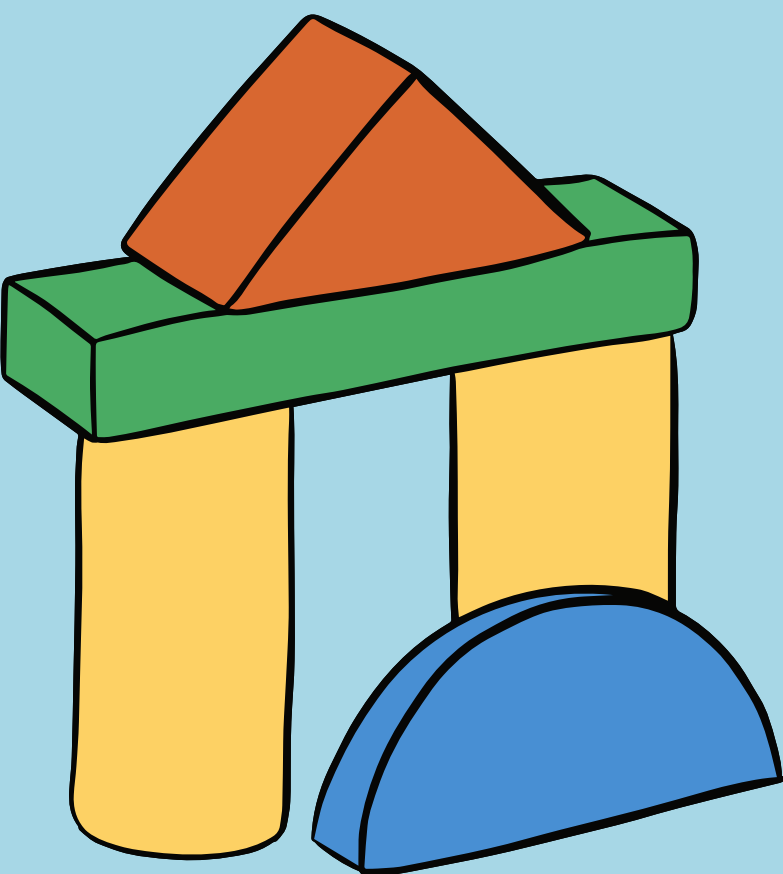
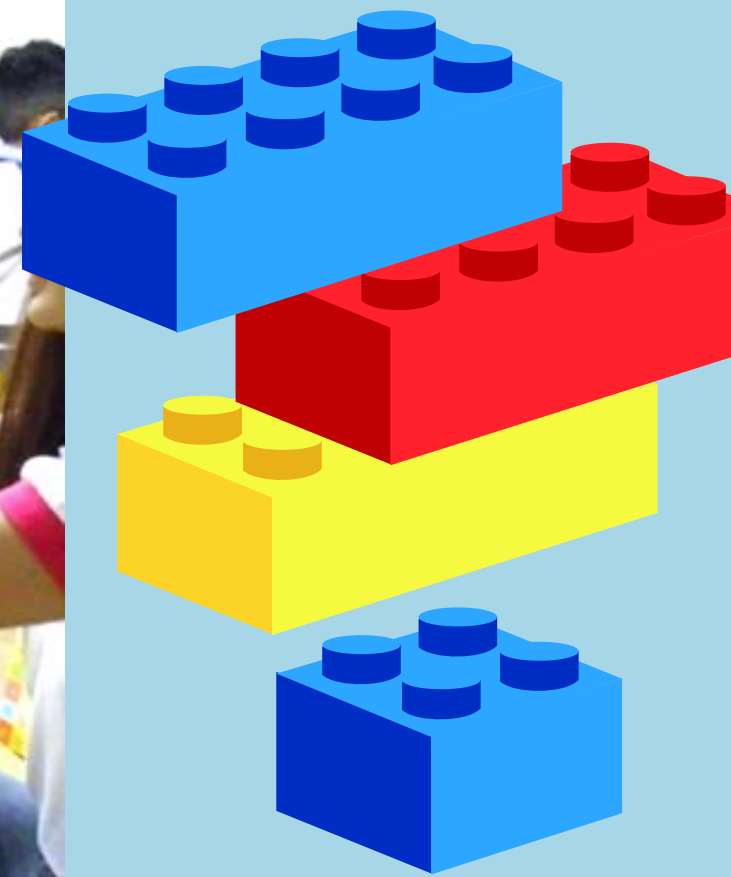


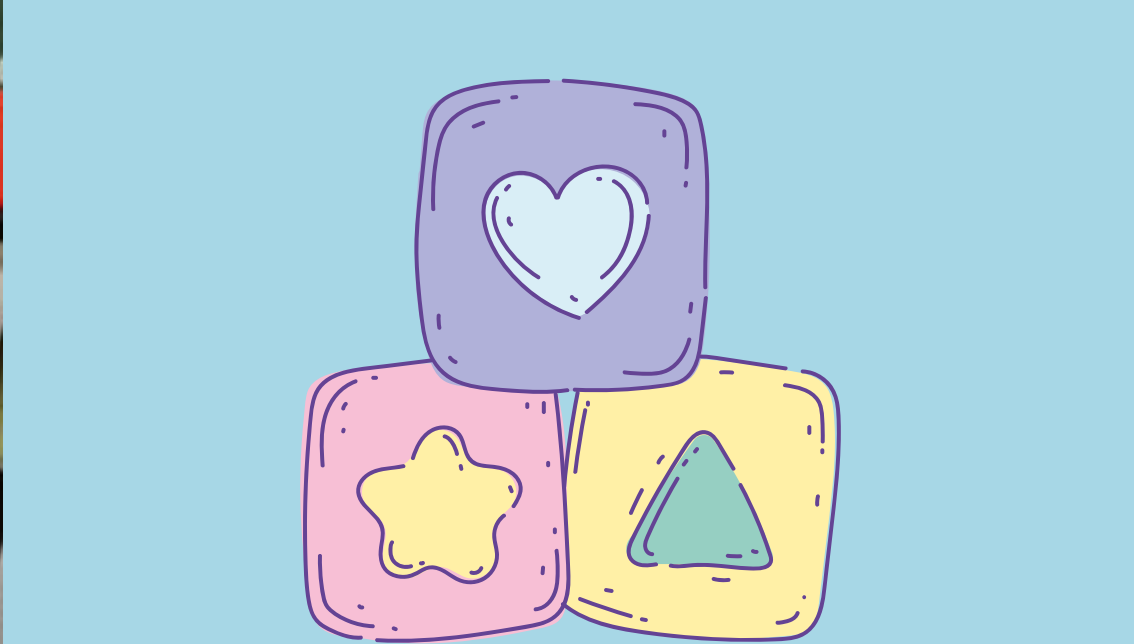


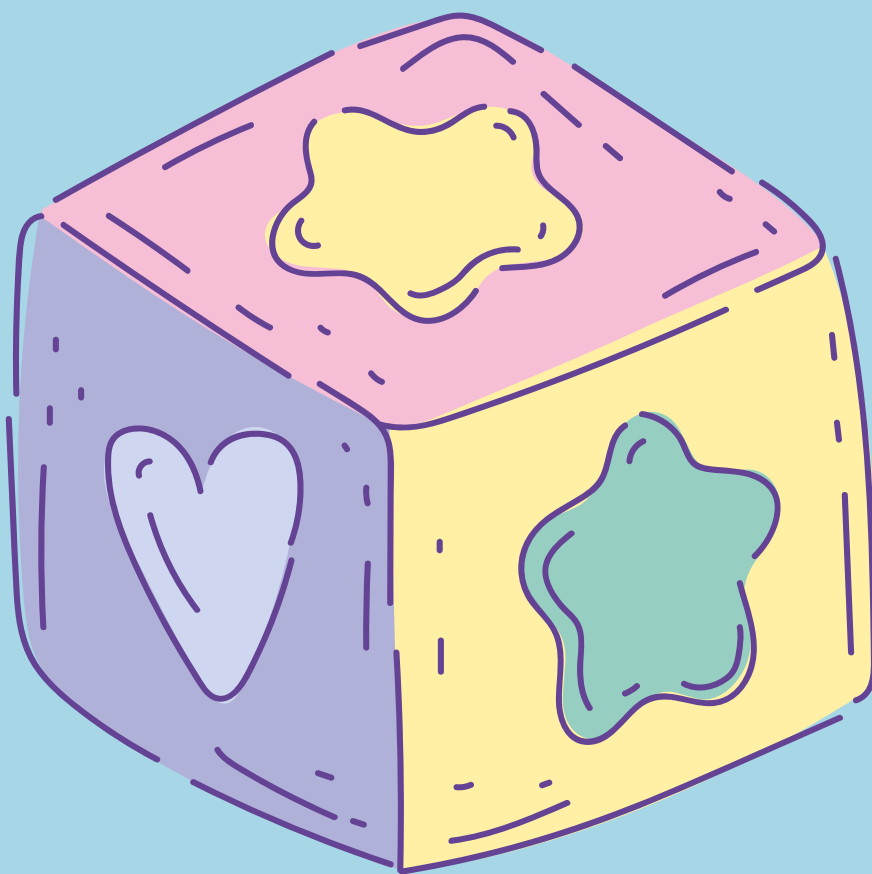
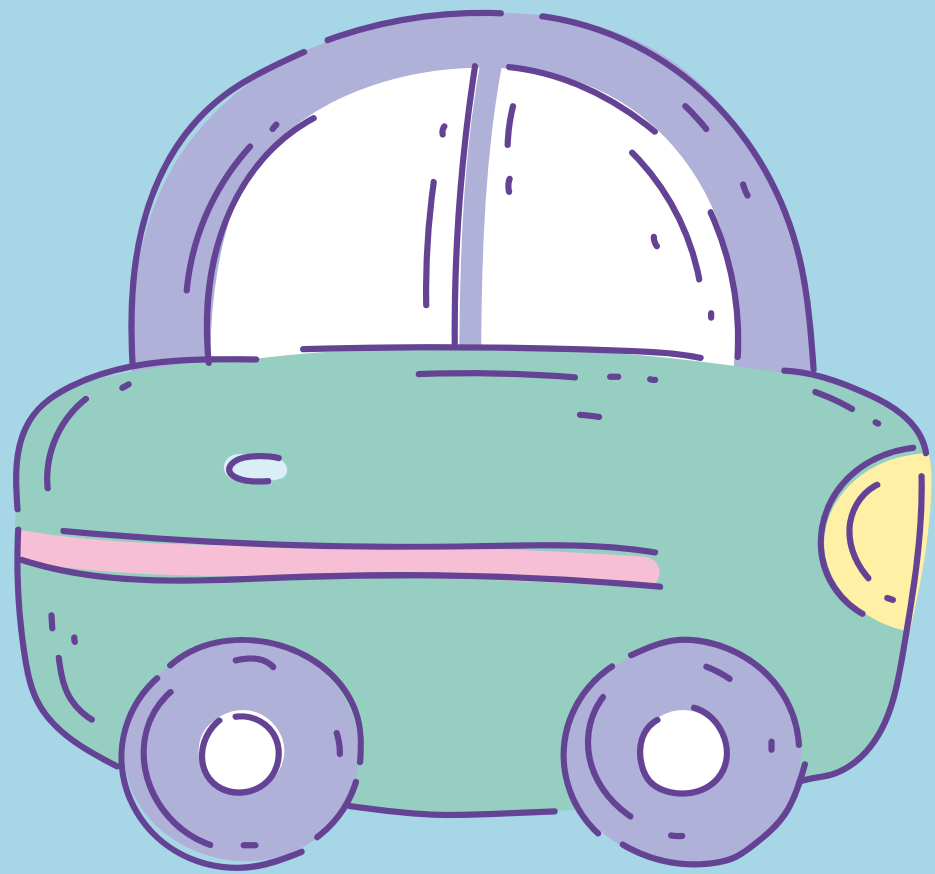
Inclusion



Learning Knows No Bounds









JULY











LAB loves!
Everyone is
family in LAB
See you soon!

